

圖 (一) 3201多功能廳 平面圖 (單位：公分)

燈具Address No. 對照表								
Chan. No.	燈型	Address No.	Chan. No.	燈型	Address No.	Chan. No.	燈型	Address No.
1	ETC LED 19	2.21 - 2.30	36	LED PAR 60	2.231-2.238	102	Axcor Profile	235 - 270
2	ETC LED 19	2.31 - 2.40	37	LED PAR 60	2.241-2.248	103	Axcor Profile	199 - 234
3	ETC LED 19	2.41 - 2.50	38	LED PAR 60	2.251-2.258	104	Axcor Profile	163 - 198
4	ETC LED 19	2.51 - 2.60	39	LED PAR 60	2.261-2.268	105	Axcor Profile	127 - 162
5	ETC LED 19	2.61 - 2.70	40	LED PAR 60	2.471-2.478	111	B-EYE K10	106 - 126
6	ETC LED 19	2.71 - 2.80	41	ETC LED CYC	271 - 280	112	B-EYE K10	85 - 105
7	ETC LED 19	2.81 - 2.90	42	ETC LED CYC	281 - 290	113	B-EYE K10	64 - 84
8	ETC LED 19	2.91 - 2.100	43	ETC LED CYC	291 - 300	114	B-EYE K10	43 - 63
11	ETC LED 10	2.1 - 2.10	44	ETC LED CYC	301 - 310	115	B-EYE K10	22 - 42
12	ETC LED 10	2.11 - 2.20	45	ETC LED CYC	311 - 320	116	B-EYE K10	1 - 21
13	ETC LED 10	2.101-2.110	46	ETC LED CYC	321 - 330			
14	ETC LED 10	2.111-2.120	47	ETC LED CYC	331 - 340			
21	AJJ LED PAR 60	2.121-2.128	48	ETC LED CYC	341 - 350			
22	AJJ LED PAR 60	2.131-2.138	49	ETC LED CYC	351 - 360			
23	AJJ LED PAR 60	2.141-2.148	50	ETC LED CYC	361 - 370			
24	AJJ LED PAR 60	2.151-2.158	51	ETC LED 26	2.381-2.390			
25	AJJ LED PAR 60	2.161-2.168	52	ETC LED 26	2.371-2.380			
26	AJJ LED PAR 60	2.171-2.178	53	ETC LED 26	2.401-2.410			
30	LED PAR 60	2.461-2.468	54	ETC LED 26	2.391-2.400			
31	LED PAR 60	2.181-2.188	61	ETC LED 36	2.411-2.420			
32	LED PAR 60	2.191-2.198	62	ETC LED 36	2.421-2.430			
33	LED PAR 60	2.201-2.208	63	ETC LED 36	2.431-2.440			
34	LED PAR 60	2.211-2.218	64	ETC LED 36	2.441-2.450			
35	LED PAR 60	2.221-2.228	101	Axcor Profile	401 - 436			
							燈桿訊號孔 A : DMX Port 1 B : DMX Port 2 C : DMX Port 3 (C為煙霧機及外加燈具專用)	

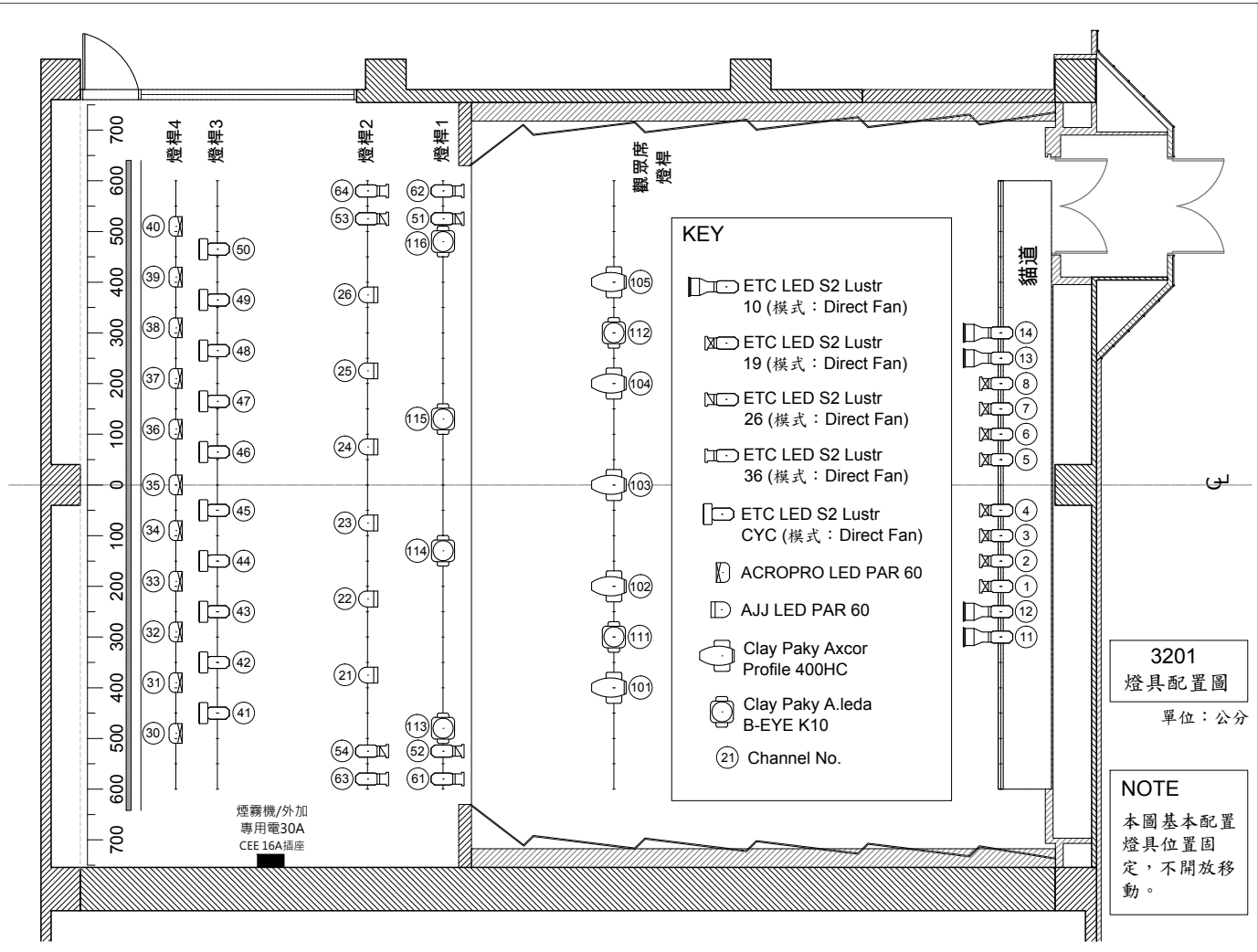


圖 (二) 3201多功能廳 燈具配置圖 (單位：公分)

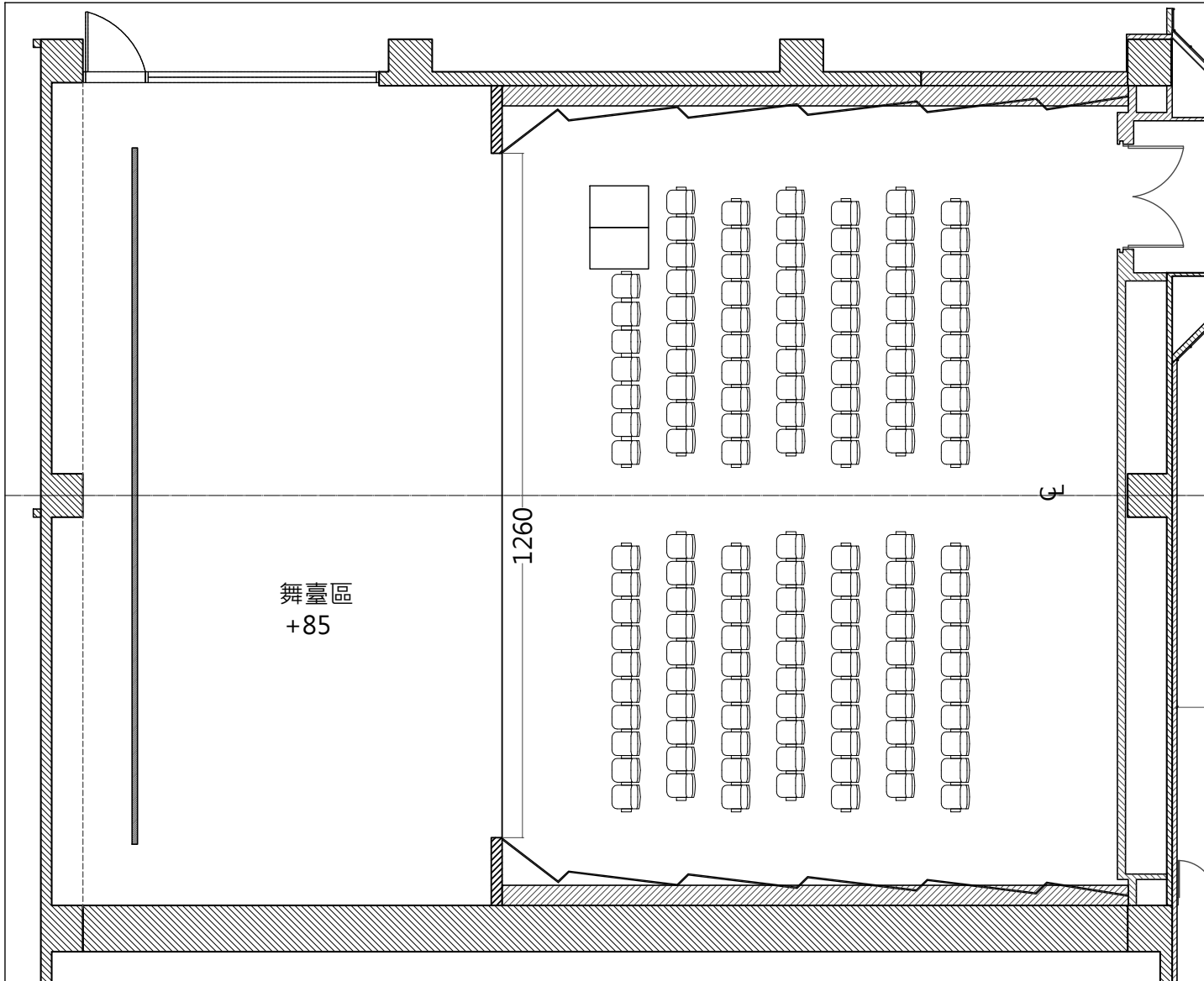


圖 (三) 3201多功能廳 座位圖 (單位：公分)